

# CA-4 Input Selector

The CA-4 Input Selector provides professional component video with audio switching using RCA connections.

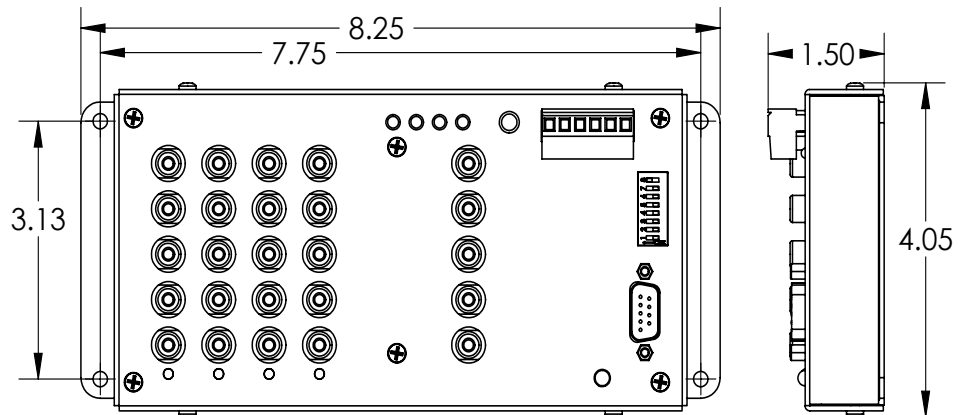
The unit features a 500MHz bandwidth to provide the absolute best quality picture even at the highest video resolutions. Stereo audio switching that can also be used for digital audio switching.

The CA-4 can operate in manual selection mode or automatic signal detection mode.

In manual mode the CA-4 can be controlled by RS232, RS485 and infrared remote command. Infrared control is with both a wired input and an infrared receiver window.

In automatic mode the CA-4 will detect and switch on the detection of a signal on the highest input. When the signal is no longer detected the CA-4 will switch back to the next lowest input with a signal or input 1 if no signals are present.

The CA-4 will teach learning infrared remote systems their control commands through the teaching IR output. You will never lose the teaching remote.



## Specifications:

Power: 12vdc 250mA wall transformer supplied  
Video Bandwidth: 500MHz (-3dB)  
Audio Bandwidth: 1MHz (analog and digital capable)  
Weight: 1lbs.

Warranty: 10 year limited

(c) copyright 2008 Avocation Systems, Inc.

All specifications subject to change without notice



10956 Ammons St.  
Westminster, CO 80021  
Ph: 303-410-6639 • 1-877-805-6639  
[www.avocationsystems.com](http://www.avocationsystems.com)